

welcome guide.

INFORMATION FOR INTERNATIONAL EXCHANGE STUDENTS





STUDYING AT MCI

Introduction	3
Address	4
Mission	5
Contact	5
MCI study programs	7
Academic year	8
Admissions for international students	8
Tuition fees	9
Orientation program for international students	9
Student tutors	9
Teaching	10
Examinations & grades	11
International program	11
Language requirements	13
mci4me	13
Internet / computer facilities	13
Photocopying	13
Library	13
Location	14

PRACTICAL INFORMATION

Entry & visa information	16
How to get to Innsbruck	16
Registration	17
Confirmation of registration	18
Accommodation	18
Health insurance	19
Emergency numbers	19
Transportation	20
Cafeteria	21
Bookstores	21
Shopping	21
Bank & postal services	21
Selection of tv & radio stations	22
Telephoning	22
Cost of living	22
Sports	22
Leisure activities	23
Innsbruck & surroundings	24
Climate	25
Checklist	27



introduction.

Located in one of Austria's most beautiful regions, MCI Management Center Innsbruck offers the perfect opportunity to enjoy a high-standard study program combined with a stimulating cultural experience. We value international students and are committed to their academic and personal success. We strive to provide an excellent learning and working environment.

This brochure has been designed to help you get started at MCI. Please do not hesitate to contact us if you have any questions.

We hope that you will find your stay both enlightening and enjoyable. Looking forward to seeing you soon!



Susanne Lichtmanegger

Dr. Susanne Lichtmanegger
Director International Relations

Andreas Altmann

Dr. Andreas Altmann
MCI Executive Director



address.

MCI Management Center Innsbruck
6020 Innsbruck / Austria, Universitaetsstr. 15
Tel. +43 512 2070, Fax +43 512 2070-1099
office@mci.edu, www.mci.edu



Spending a semester in Innsbruck is spectacular. I love the natural beauty combined with the architecture of the buildings. It is also great to take classes at MCI, where we were taught by professors from around the world. Most of all, I love the people that I am meeting and building friendships that will last a lifetime!

Dana McKeag, Orlando, USA

mission.

MCI Management Center Innsbruck is a non-profit institution of higher education officially acknowledged by the Austrian Federal Ministry for Science and Research. MCI was established in 1995 by the University of Innsbruck and its Business School, the Federal State of Tyrol, the City of Innsbruck, the Tyrolean Chamber of Commerce, the Tyrolean Chamber of Labor and the Tyrolean Industrial Association. Thanks to its high-quality, customer-oriented programs, MCI has become one of the leading educational institutions in Austria / Southern Germany.

MCI wants to mentor motivated people who intend to build their own futures through goal-oriented education and training programs, and thereby contribute to their competitiveness. MCI places the highest value on a quality academic background, topicality, relevance to practice, interdisciplinarity and internationality. There are currently 2,500 students enrolled.

The range of programs at MCI includes degree programs (full-time or part-time programs for working professionals), summer schools, management courses, seminars and customized company trainings. The target audience are students, junior managers and decision-makers from business, public administration, culture and politics.

contact.

For questions regarding your program at MCI and MCI's international activities, please contact: international@mci.edu

SUSANNE LICHTMANNEGGER

Director International Relations

+43 512 2070-1610, susanne.lichtmannegger@mci.edu

MATTHIAS SPARBER

Assistant & Project Manager

+43 512 2070-1623, matthias.sparber@mci.edu

MARGARETHE KARL-GOODWIN

Incoming Students Co-ordinator

+43 512 2070-1622, margarethe.karl-goodwin@mci.edu

STEFAN TRENKER

Assistant & Project Manager

+43 512 2070-1621, stefan.trenker@mci.edu

CLAUDIA PAUZENBERGER

Outgoing Students Co-ordinator

+43 512 2070-1624, claudia.pauzenberger@mci.edu

LEENA SAURWEIN

Lecturer & Project Manager

+43 512 2070-1625, leena.saurwein@mci.edu





A great experience to meet new people in a fantastic environment.
The perfect way to finish your degree.

Emma Rico Escobar, Spain

I really like it here. There is so much to learn from all the people
you meet, all the places you go and the cultures you observe. It
really was a great finish to my educational career.

James Murray, USA

mci study programs.

MCI programs offer a solid academic foundation combined with practice-oriented professional education at tertiary level and are characterized by intensive tutoring of the students. Projects, professional internships in domestic and foreign companies and the opportunity to study abroad are integral parts of MCI study programs. Most study programs are predominantly taught in German but have English components. However some Master's programs are entirely taught in English. Due to the limited number of places of study, students are admitted on the basis of a selection process.

BACHELOR'S PROGRAMS	DEGREE	SEM.	LANGUAGE	FT	PT
Management, Communication & IT	Bachelor of Arts (BA)	6	G & E	✓	
Management & Law	Bachelor of Arts (BA)	6	G & E	✓	
Mechatronics – Mechanical Engineering	Bachelor of Science (BSc)	6	G & E	✓	✓
Nonprofit, Social & Health Care Management	Bachelor of Arts (BA)	6	G & E	✓	
Social Work	Bachelor of Arts (BA)	6	G & E	✓	
Tourism Business Studies	Bachelor of Arts (BA)	6	G & E	✓	
Engineering, Environmental & Biotechnology <i>Specialization Biotechnology</i> <i>Specialization Environmental Technologies</i>	Bachelor of Science (BSc)	6	G & E	✓	
Environmental, Process & Energy Engineering	Bachelor of Science (BSc)	6	G & E		✓
Business & Management	Bachelor of Arts (BA)	6	G & E		✓

MASTER'S PROGRAMS	DEGREE	SEM.	LANGUAGE	FT	PT
Entrepreneurship & Tourism	Master of Arts (MA)	4	G & E	✓	
International Business (starting 2012)	Master of Arts (MA)	4	E		✓
International Business & Law	Master of Arts (MA)	4	E	✓	
International Health Care Management	Master of Arts (MA)	4	E	✓	
Management, Communication & IT	Master of Arts (MA)	4	E	✓	
Mechatronics – Mechanical Engineering (starting 2011)*	Master of Science (MSc)	4	G & E	✓	✓
Social Work, Social Policy & Management	Master of Arts (MA)	4	G & E	✓	
Engineering, Environmental & Biotechnology <i>Specialization Biotechnology</i> <i>Specialization Environmental Technologies</i>	Master of Science (MSc)	4	G & E	✓	
Industrial Engineering & Management	Master of Science (MSc)	4	G & E		✓

* The master's program Mechatronics – Mechanical Engineering starts in 2011 as full-time program and in 2012 as part-time study program.
Language: G = German, E = English, G & E = German with major parts in English; FT = Full-time, PT = Part-time;

academic year.

The academic year is divided into 2 semesters.

Semester dates:

Fall:

Bachelor level: early September to late January

Master level: early October to mid-February

Spring:

Bachelor and Master level: early March to mid-July

APPLICATION DEADLINES FOR INTERNATIONAL STUDENTS:

15 May for the fall semester

15 November for the spring semester

admissions for international students.

If you would like to study at MCI within the Erasmus or another exchange program, please contact the international co-ordinator at your home institution first to find out if an exchange agreement with MCI exists, whether you meet the admission requirements and whether courses at MCI will be recognized by your home institution. If you are nominated for an exchange semester at MCI by your home institution and have ensured transferability of credits with your home institution, please submit your completed **APPLICATION FORM, LEARNING AGREEMENT, TRANSCRIPT OF RECORDS** and a **PASSPORT PHOTO** by 15 May / 15 November to:

Management Center Innsbruck

International Relations Office

6020 Innsbruck / Austria, Universitaetsstr. 15

Fax: +43 512 2070-1699, international@mci.edu

Please note that we only accept students from institutions of higher education which have an exchange agreement with us.

tuition fees.

In Austria students are required to pay a tuition fee of approximately EUR 400 per semester. Students who are studying at MCI within the Erasmus program or another exchange program are exempted from tuition fees. However, you will have to bear the costs for manuals, course-materials and the membership fee for the Austrian Student Union of approximately EUR 40. The membership includes an insurance that covers accidents on your way to and from the campus.

orientation program for international students.

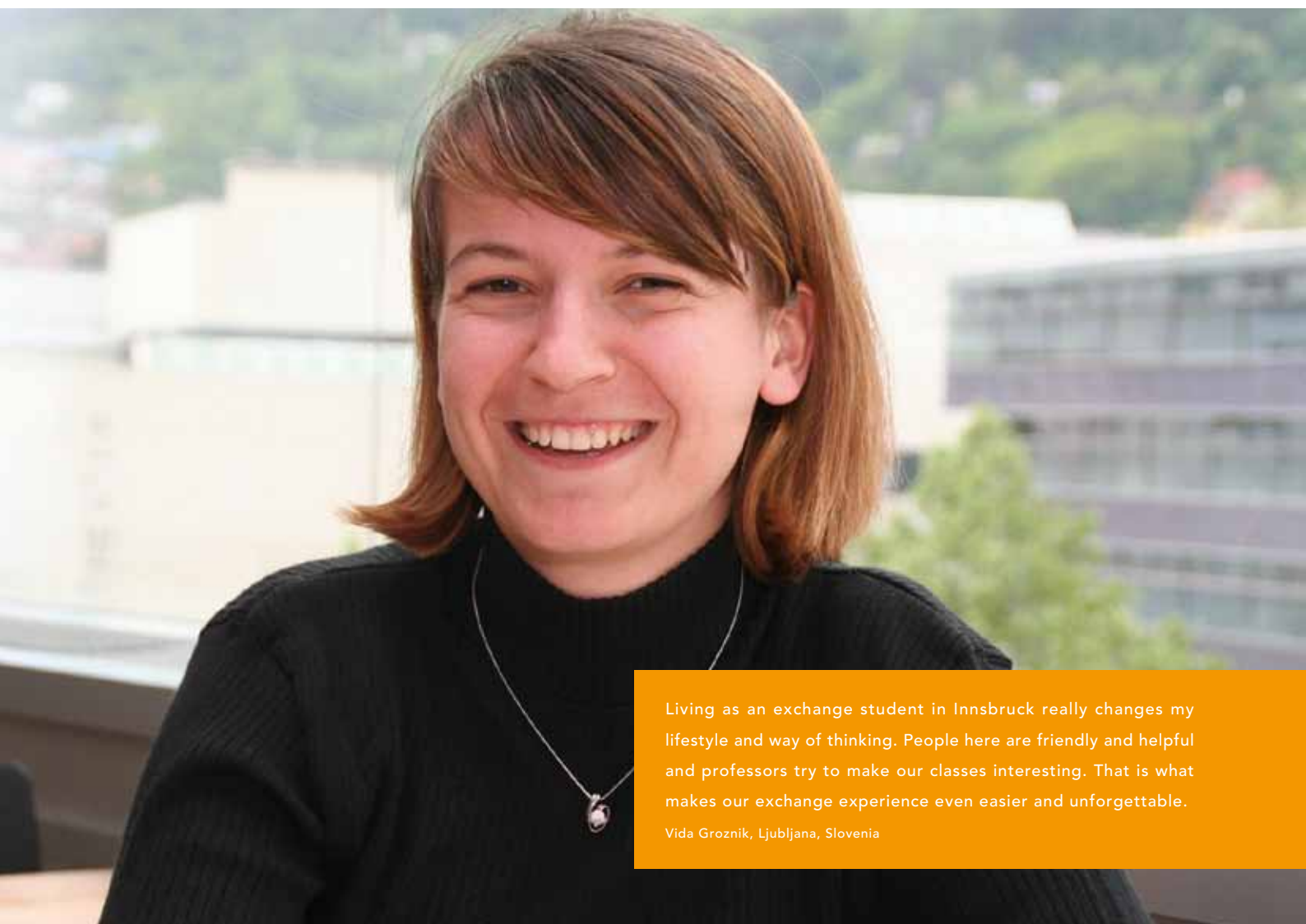
An orientation program for foreign students takes place at the beginning of the semester, during which enrolment and formalities are completed. You will, of course, also be introduced to MCI, important facilities for students and the city of Innsbruck. Attendance of this program is mandatory.

student tutors.

MCI students will be happy to mentor exchange students and help them do the necessary paperwork and settle in during the first few weeks in Innsbruck.

teaching.

To ensure excellent quality and intensive student support, attendance of courses is mandatory. Generally, classes are held from 09:00 – 12:15 and from 13:15 – 16:45. In addition to the theoretical component, most courses include a practical component, which requires the active participation of students. Instruction in small groups, team tasks and projects as well as case studies are highly valued. MCI uses the European Credit Transfer System (ECTS). The ECTS was developed by the European Commission in order to make mutual recognition of courses easier. According to the system, each course is assigned credits, which represent the average student workload for the successful completion of the course. The full workload in one academic year is 60 credits, thus 30 credits per semester. International exchange students usually take courses worth between 15 and 30 ECTS credits per semester.



Living as an exchange student in Innsbruck really changes my lifestyle and way of thinking. People here are friendly and helpful and professors try to make our classes interesting. That is what makes our exchange experience even easier and unforgettable.

Vida Groznik, Ljubljana, Slovenia

examinations & grades.

Examinations generally take place at the end of the semester. Learning achievement is primarily assessed through a written examination, under certain circumstances in combination with a project work. In some cases, examinations are also oral. For a positive evaluation of written examinations, 60% of the total points must be achieved. In general, the positive completion of a course requires the positive evaluation of the written exam and / or project, active participation throughout the course and 80% course attendance. The evaluation system is as follows:

GRADE	DESCRIPTION	POINTS
1	very good	100 – 90
2	good	89 – 80
3	satisfactory	79 – 70
4	sufficient	69 – 60
5	failed	59 and less

international program.

MCI offers a number of courses specifically targeted at exchange students. These courses are frequently taught by renowned guest professors. They also cover extracurricular topics (e.g. Understanding Austrian Society and Culture). You are welcome to attend these courses in addition to the courses offered by the various degree programs.

The "German Language Course for Incoming Students" is also part of our international program. Students are divided into different groups – from beginners to advanced level. Contrary to other courses, the German course is not free of charge (course fee: EUR 95 per semester).

Intensive German courses in summer (July / August) are offered by the "Innsbrucker Hochschulkurse Deutsch (IHD)". For more information please go to www.uibk.ac.at/ihd.



MCI is a top-notch institution located in the heart of the Alps. You can't help but fall in love with this place.

Gregory Kramer, USA

MCI is a good place to study with very high-tech buildings and a lot of people are always ready to help you.

Giuseppina Secchi, Italy

MCI is a great place to study. You will never get bored, otherwise just look out to the mountains – they will make you dream! Innsbruck is also in the middle of Europe – awesome for travelling!

Matthieu Thiriez, France

language requirements.

MCI offers a number of Master's programs in English. In all other degree programs one semester is taught entirely in English. Otherwise, instruction is mostly in German. Good language skills are necessary to maintain the high quality of courses. MCI reserves the right to test your fluency in the language of instruction before accepting you as an exchange student.

mci4me.

Information relevant to students of all programs as well as examination results can be found on www.mci4me.at. This is MCI's main information platform for students.

Please check www.mci4me.at as well as your mci4me e-mail account every day for the latest news on courses, exams, and events, or other relevant information.

internet / computer facilities.

PC workstations are available to students in various parts of the MCI buildings during opening hours. All students receive an e-mail account at the beginning of their program and have access to the Internet. During the semester all e-mails will be sent to your mci4me e-mail account.

photocopying.

Photo copies are available for students on the 2nd floor of MCI I (near the "Infodesk"), as well as in all other MCI buildings. For larger quantities, please use the Copy Center on the SoWi campus (ground floor of the Social Sciences Faculty) or SoWi Copy & Print (Kaiserjaegerstr. 1, across from MCI), where you can also buy copy cards.

library.

MCI maintains three study environments providing access to scientific literature, current newspapers and magazines. You can access study environments during official opening hours on the following campuses:

- MCI I, Universitaetsstr. 15, 2nd floor
- MCI III, Weiherburggasse 8, ground floor
- MCI IV, Egger-Lienz-Str. 120, 6th floor

All student work stations at MCI allow access to various scientific databases (e.g. WISO, Emerald, Law Databases, etc.), a service that is continuously being extended. PC work stations at the SoWi library provide access to other online research facilities and databases.

All MCI students also have access to the library of the University of Innsbruck. The largest scientific library in western Austria provides access to 900 scientific journals, 60,000 books in the open access areas, 140,000 volumes in the library archive and electronic databases. The SoWi library is a major part of the main University Library of Innsbruck and is located directly across from MCI I.

The library is open every day of the week.

location.

MCI offers an excellent infrastructure including attractively equipped seminar, computer and group work rooms, and state-of-the-art work and research facilities in the largest scientific library of Western Austria. Convenient parking facilities are available and MCI is easily accessible by public transport.

MCI comprises 5 buildings housing seminar rooms, computer labs, and offices.

CAMPUS MCI I / MCI II (Universitätsstr. 15) close to the city center and the old town of Innsbruck:

The International Relations Office and other student services can be found there. It also hosts the following study programs:

Bachelor's programs: Management, Communication & IT | Management & Law | Nonprofit, Social & Health Care Management | Social Work | Mechatronics–Mechanical Engineering | Business & Management

Master's programs: International Business (starting 2012) | International Business & Law | International Health Care Management | Management, Communication & IT | Mechatronics–Mechanical Engineering (starting 2011)* | Social Work, Social Policy & Management

* The master's program Mechatronics – Mechanical Engineering starts in 2011 as full-time program and in 2012 as part-time study program.

CAMPUS MCI III is situated near the Alpenzoo (Weierburggasse 8):

Bachelor's program: Tourism Business Studies

Master's program: Entrepreneurship & Tourism

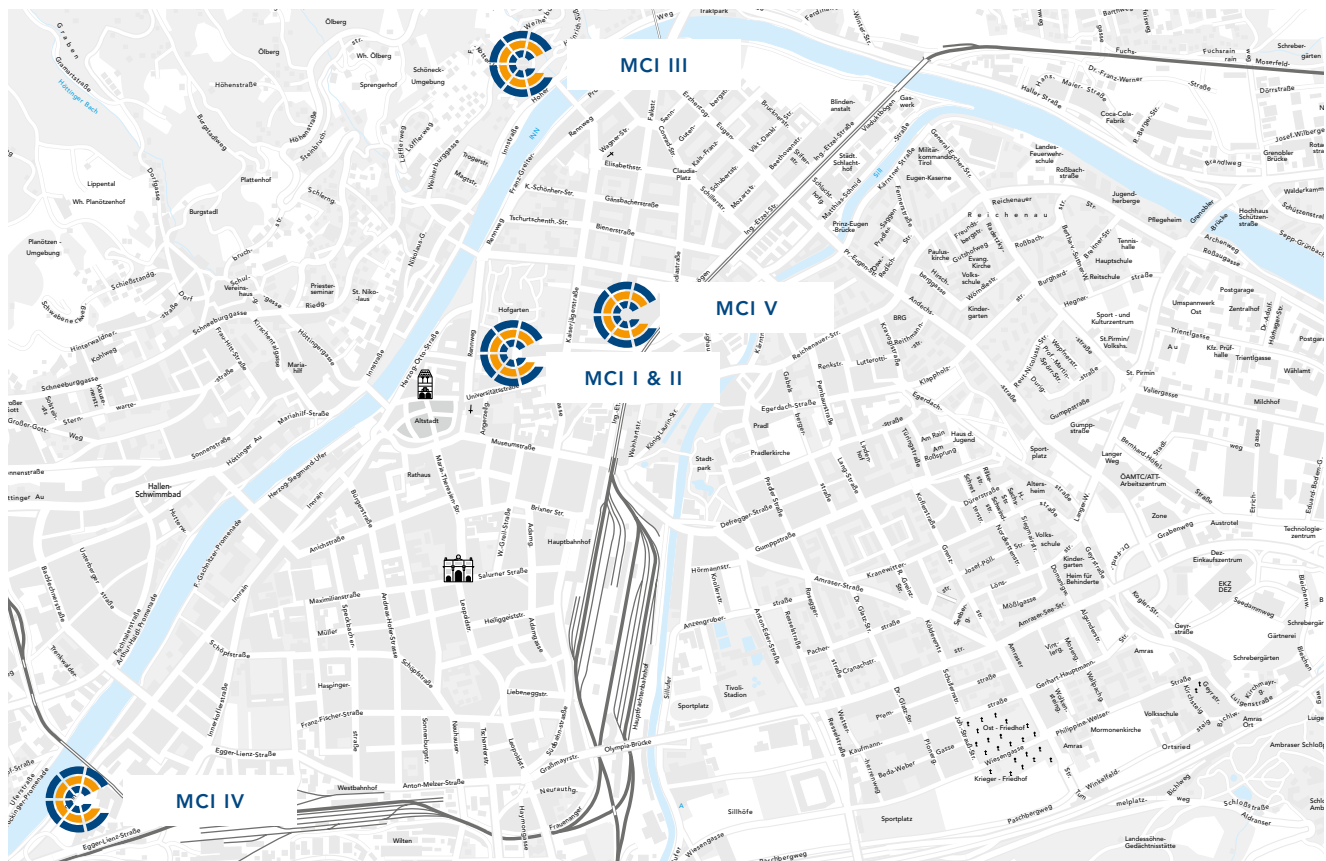
CAMPUS MCI IV is located near the freeway exit "Innsbruck West" (Egger-Lienz-Str. 120):

Bachelor's programs: Engineering, Environmental & Biotechnology | Environmental, Process & Energy Engineering

Master's programs: Engineering, Environmental & Biotechnology | Industrial Engineering & Management

CAMPUS MCI V (Kapuzinergasse 9) seminar rooms complementing MCI I & II

Classes can take place on any of these campuses. To find the rooms for individual courses check the telescreens in the MCI buildings or refer to "rooms and lectures" on mci4me.





entry & visa information.

For students from the European Union (EU), the European Economic Area (EEA) or Switzerland a valid travel document (passport or identity card) is sufficient for entering Austria. Sufficient financial means (e.g. stipends, credit cards, bank statements) and health insurance (valid in Austria) must be evidenced after arrival (see confirmation of registration page 18).

Students from all other countries (so-called "Third Countries") need a valid passport and visa to enter and study in Austria. Visas must be applied for in advance in your home country; please contact your local Austrian Embassy. Students from Third Countries will usually get a visa D.

If you stay in Austria for more than six months, a student residence permit ("Aufenthaltsbewilligung Studierender") must be obtained. Please apply for this permit as early as possible because the processing can take several months and there are costs involved.

Please note that a student visa / residence permit does not include permission to work. In Austria illegal work may lead to fines or prison sentences as well as to expulsion from the country. Students holding an EU / EEA passport are allowed to work in Austria without any further permit being required (there may be some restrictions though). Students from all other countries who are in possession of a valid student residence permit are allowed to work to a very limited extent. However, they still require a work permit issued by the employment office ("Arbeitsmarktservice / AMS"). Such employment must not be the primary source of income for covering costs of living and education but may only serve to provide some extra income.

Check www.oead.ac.at for more detailed information on visa regulations in Austria; there you can also find the list of documents required for application. For further information on entering Austria and visa requirements, application forms as well as a list of required documents, please contact the Austrian Embassy in your home country.

how to get to innsbruck.

Innsbruck is easy to reach by car, train and plane (approx. 2 hours by car from Munich, 5 hours from Vienna, 3 hours from Verona). The train station is located near the city center, the airport is approx. 10 – 15 minutes by car or bus (Line F) from the city center. If you travel by car, please note that long-term parking in the city is difficult to find. A toll sticker is required for Austrian motorways. Toll stickers are available for one year, two months or 10 days and can be purchased at petrol stations (EUR 76.20 / 22.90 / 7.90 respectively).

A city map with directions to MCI can be found on our website: www.mci.edu/com/location

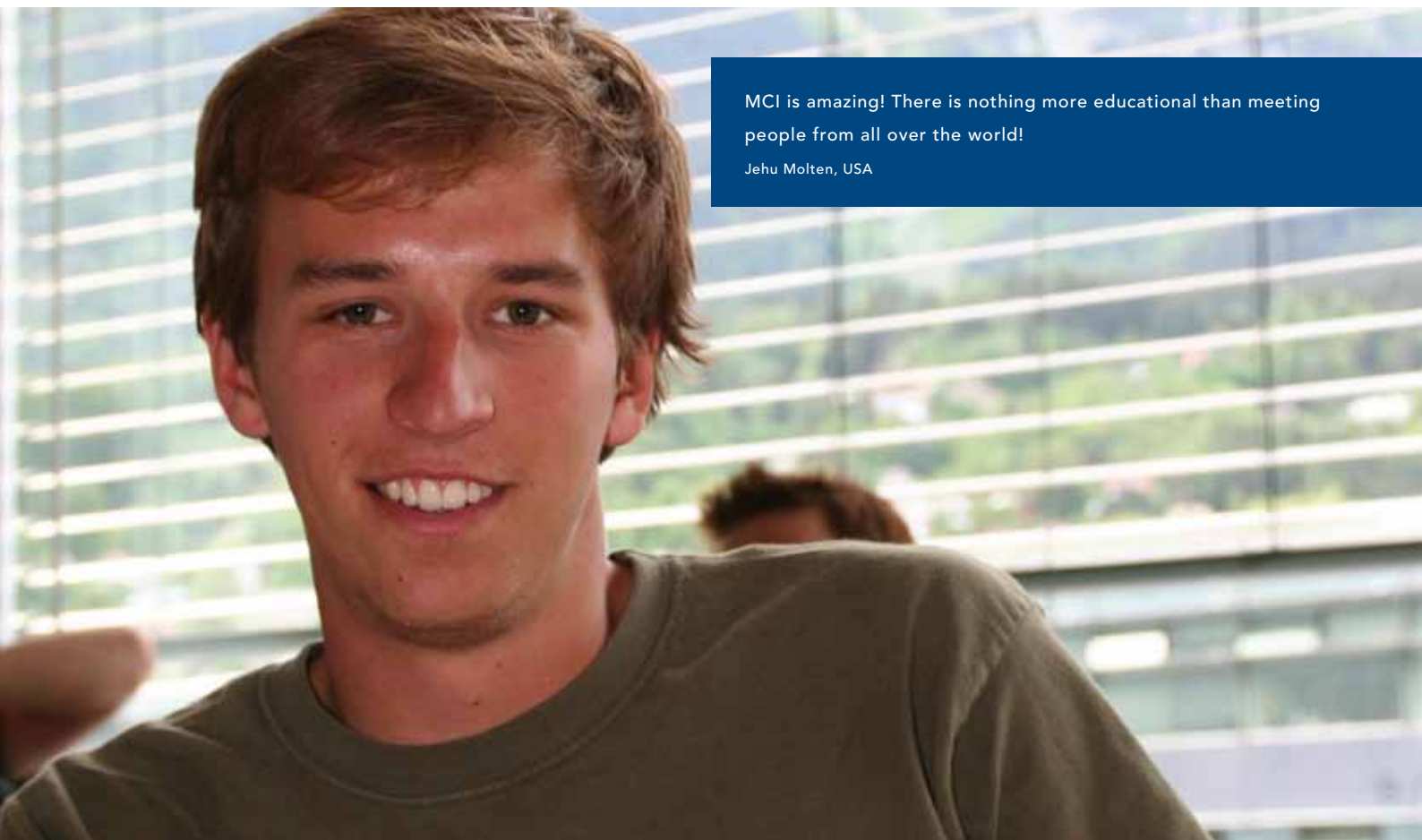
registration.

Within three days of arriving in Austria, you must register at the Registration Office ("Meldeamt") of the city of Innsbruck, i.e. inform them of your address, for which you need the following:

- completed registration form ("Meldezettel")
You can download the form at: www.innsbruck.at (go to: "Bürgerservice" - "Formulare" - "Meldezettel"). The registration form must be signed by your landlord or student dormitory office before you submit it to the Registration Office.
- valid passport

Please register at the "Referat Melde- und Einwohnerwesen" (Office for Registration and Residents), Maria-Theresien-Strasse 18 (Rathaus-Galerien), 1st Floor, Rooms 1209 – 1219 (Only rooms with odd numbers!), Mon – Thu: 08:00 – 15:00, Fri: 08:00 – 12:00.

Please keep your copy of the registration form, because it is often required by the authorities. If you change your address during your stay in Innsbruck, you must inform the Registration Office. Before leaving Austria and returning to your home country you must deregister at the same office.



MCI is amazing! There is nothing more educational than meeting people from all over the world!

Jehu Molten, USA

confirmation of registration.

Students from EU / EEA countries and Switzerland also have to apply for a confirmation of registration ("Anmeldebescheinigung") if they stay in Austria for more than 3 months. This has to be done within the first 4 months of their stay. The application fee is EUR 15. For this registration the following documents are required:

- completed and signed application form
- valid ID (e.g. passport)
- proof of international health insurance coverage (e.g. European Health Insurance Card, insurance policy)
- proof of sufficient financial means
- confirmation of admission to MCI ("Inskriptionsbestätigung")

This confirmation of registration is necessary in addition to the registration at the "Meldeamt"! In case of non-compliance with this regulation a fine may be imposed.

accommodation.

There are different ways of finding accommodation in Innsbruck. MCI itself does not have its own student dormitory, but co-operates with the student dormitory "Internationales Studentenhaus (ISH)", so that exchange students can book their rooms in this dormitory directly through MCI. As only a very limited number of rooms is available in this dormitory, students must book their rooms very early.

Students may also book rooms in other student dorms through the Austrian Exchange Service (ÖAD) or look for private accommodation.

DORMITORIES

Chances of forming new friendships are very high in dormitories. Also you don't have to worry about much. There is an on-site technician for all kinds of problems. Internet and TV access, kitchens, fitness and music rooms, ski-storage and possibilities for recreational activities are all included in the service. Some houses also offer single rooms with a small kitchen.

SHARED APARTMENT

Living in a shared apartment with Austrian students is a great way to improve your German language skills and make new friends. Sometimes Austrian students who go abroad for a semester sublet their rooms / apartments to international students.

STUDIO APARTMENT

If you don't like to live with a roommate and share a kitchen and bathroom with other people, you may want to look for a studio apartment. Most studio apartments for rent on the housing market are unfurnished. Prices are rather high in Innsbruck and you have to take care of any occurring problems yourself (e.g. call the plumber).

On www.mci.edu/international you can find more information and links to all relevant accommodation possibilities in Innsbruck.

health insurance.

Students from EU / EEA countries and Switzerland have access to medical services with a valid European Health Insurance Card. Please ask your national health insurance how to obtain this card. In most cases your national health insurance card corresponds to your European Health Insurance Card. In emergency situations you can go directly to a doctor in Austria with this card (please make sure that the doctor has a contract with the Tyrolean Health Insurance – not all doctors do). You will pay the same costs for your treatment as an Austrian citizen – which are generally very low. For detailed information on services, please contact the Tyrolean Health Insurance (“Tiroler Gebietskrankenkasse”).

If you are from a country outside of the EU / EEA and Switzerland (i.e. nationals of Third Countries) you need to purchase private international health insurance in your home country before coming to Austria. In this case please check what is covered by this insurance (e.g. Are skiing accidents also covered?). Read the policies and conditions carefully to find out e.g. whether you have to pay upfront when seeing a doctor and will be reimbursed later or if the insurance directly pays for treatment.

In the rare case that you are not from the EU / EEA but can enter Austria without a visa (e.g. Japanese students) you have a second option: You can purchase a voluntary student health insurance (“Freiwillige Selbstversicherung für Studenten”) from the Tyrolean Health Insurance (“Tiroler Gebietskrankenkasse – TGKK”). The costs are currently EUR 24.42 per month. You apply for it at the TGKK; you must bring your confirmation of admission (“Inskriptionsbestätigung”) and the registration form (“Meldezettel”) for the application. With this insurance you have the same insurance coverage as an Austrian citizen.

MCI will check if you have a valid health insurance during the orientation week.

If you get ill you can either go to a doctor of your choice or to the University Hospital, Anichstr. 35. At night and on weekends, please contact the Emergency Doctor at Tel. 141 or in an emergency, the Ambulance Service at Tel. 144. Medications can only be purchased in pharmacies. Information regarding pharmacies’ night and weekend service can be found on information boards outside every pharmacy and in local newspapers.

TIROLER GEBIETSKRANKENKASSE (TGKK)

6020 Innsbruck / Austria, Klara-Pölt-Weg 2
+43 512 59160, www.tgkk.at

emergency numbers.

EUROPEAN EMERGENCY NUMBER

TEL. 112 for

- Fire Brigade
- Police
- Ambulance
- Emergency Doctor
- Mountain Rescue

CAR BREAKDOWN

Towing Service ÖAMTC Tel. 120
ARBÖ Tel. 123

transportation.

LOCAL PUBLIC TRANSPORTATION

The city of Innsbruck has a very good public transport system. Some lines are also served at night. You can purchase a discount card to get reduced bus fares. A monthly pass is EUR 42.50, a single ticket EUR 1.80 (without discount card). Students under 20 will get a youth discount.

The Public Transport Service Innsbruck ("Innsbrucker Verkehrsbetriebe – IVB") also offers taxi services at reduced fares at night (womens' night taxi and hailed shared taxi).

For more information on local public transport (also lines and schedules) in Innsbruck please refer to the customer service center of the IVB, Stainerstr. 2 or to www.ivb.at.

AUSTRIAN FEDERAL RAILWAY (ÖBB)

The "Vorteilscard" of the Austrian Federal Railway (ÖBB) enables you to purchase train tickets at half price. Students under 26 can purchase the "Vorteilscard" for approx. EUR 20 at the main train station or at the customer service center of the Public Transport Service Innsbruck (IVB), Stainerstr. 2. Please bring your passport or identity card and a passport photo.
www.oebb.at, www.ivb.at

BIKES

Innsbruck is a relatively small city with a very good biketrail network. Therefore, most students use a bike to get around town. You can find used bikes in several bike stores as well as in the local newspapers' classified sections.

Selected bike stores

Conrad Fahrradreparatur und Recycling
Ampfererstr. 30
+43 512 276869, conrad@wams.at

Mountain-Bike Stadl
Fürstenweg 97
+43 512 288436

Rad & Tat
Defreggerstr. 19
+43 512 360101, info@bikeoutlet.at

Sprint Fahrradtechnik
Klappholzstr. 25
+43 512 288111, fahrradsprint@aon.at

Newspaper

You can find small advertisements for used bikes in the newspapers "Stadtblatt" (free!) or "Tiroler Tageszeitung" (also online: <http://basar.tirol.com>).

Online

Flohmarkt: www.flohmarkt.at



cafeteria.

Around the campus of MCI as well as in the nearby old town there are various restaurants and cafes. Affordable menus for students are offered at the "SoWi Lounge" student cafeteria in the Social Sciences building directly across from MCI. Lunch costs between EUR 4 and 5.50. There are several coffee and soft drink vending machines in the various MCI buildings.

bookstores.

The university bookstore "Studia" on the ground floor of the main MCI building, Universitaetsstr. 15a, offers a comprehensive range of academic literature as well as office supplies. Other well-known bookstores in Innsbruck include Wagner'sche Universitätsbuchhandlung (Museumstr. 4), Tyrolia (Maria-Theresienstr. 15) and Wiederin (Sparkassenplatz 3), all within walking distance of MCI.

shopping.

The opening hours of most shops and supermarkets are 09:00 – 19:00 on weekdays and 09:00 – 17:00 on Saturdays. On Sundays and national holidays shops are closed. You can buy groceries at some gas stations. The bakery and the supermarket at the main train station are also open on Sundays.

There are two large supermarket chains in Tyrol which you will find all across town: Spar and M-Preis. Alternatives are Hofer, Merkur and Billa.

Innsbruck has several larger shopping centers, namely "Sillpark" (near the train station), "Rathaus Galerien" (Maria-Theresienstr.), "Kaufhaus Tyrol" (Maria-Theresien-Strasse), "DEZ" (eastern city limits), and "Cyta" (in Völs, west of Innsbruck).

bank & postal services.

Please contact your bank at home regarding the cheapest way to transfer and withdraw money during your time abroad. Fees for money transactions to a foreign country can be high. Not all shops in Austria accept credit cards (especially for small amounts); but debit cards are widely used to make cashless payments. Also some dormitories require an Austrian bank account to deduct the monthly rent from your account. Therefore opening a bank account in Austria might be necessary.

Most Austrian banks offer special conditions for student accounts. Opening hours of banks are normally Mon – Thu: 09:00 – 12:00 and 14:00 – 16:00, on Fridays banks close at 15:00. Some banks in the city center are also open during lunch hours. The nearest ATMs are located on the east side of the MCI building and in Kaiserjaegerstr. 4a.

The closest post offices are at the train station (Bruneckerstr. 1 – 3) and Stainerstr. 3. Opening hours are 09:00 – 18:00. The main post office in Maximilianstr. 2 is open Mon – Fri, 07:00 – 20:00, Sat, 09:00 – 15:00, and Sun, 10:00 – 18:00. Post offices also offer telephone, fax and copy services.

selection of tv & radio stations.

AUSTRIA HAS 4 PUBLIC RADIO STATIONS:

Ö1	oe1.orf.at	Frequency in Innsbruck 87,6
Ö2 Radio Tirol	tirol.orf.at	Frequency in Innsbruck 94,6
Ö3	oe3.orf.at	Frequency in Innsbruck 99,5
FM4	fm4.at	Frequency in Innsbruck 102,5

and several private radio stations.

Also two national TV stations ORF 1 and ORF 2 are provided by the state of Austria. TV and radio are subject to registration at GIS (www.orf-gis.at) with a monthly fee.

telephoning.

Austria has one of the highest mobile phone per capita rates in the world. Public telephones, therefore, cannot be found everywhere. There are public telephones on the ground floor of the SoWi building (to the right of the main entrance). Please contact local mobile phone companies regarding fees and offers:

A1	Wilhelm-Greil-Str. 21, Sillpark
Bob	available at post offices and Spar supermarkets
Drei	Museumstr. 3
Tele-Ring	Leopoldstr. 2
T-Mobile	DEZ shopping center
Orange	Kaufhaus Tyrol
Yesss	available in Hofer supermarkets

The country code of Austria is 0043 (+43), the area code of Innsbruck is (0)512.

cost of living.

Life in western Austria is often found to be relatively expensive. For accommodation, meals and leisure activities, you will need EUR 800 to 1000 per month; this amount naturally depends on your personal lifestyle and may also be a little less or more. Accommodation EUR 300 to 400, food EUR 220, study and personal requirements EUR 300 to 400 (books, recreation). Lunch at the SoWi Lounge student cafeteria costs between EUR 4 and 5.50, a cup of coffee EUR 2.50 to 3, a cinema ticket EUR 5.50 to 9, a one-day ski pass approx. EUR 30. A season ski pass for the Innsbruck area costs approx. EUR 300.

sports.

Sports enthusiasts enjoy the numerous sports activities available in Innsbruck. Hardly any other European city offers such a large variety of sports opportunities in both summer and winter. People carrying a snowboard under their arm or wearing mountain boots are not an unusual sight in the city center – the closest cable car is just a few minutes from the old town.

SPORTS COURSES

The Sports Institute at the university (USI) offers courses in over 60 types of indoor and outdoor sports. Information and registration: www.uibk.ac.at/usi

The Austrian Alpine Club also offers a full program for ski touring, climbing, mountain biking, etc.: www.alpenverein.at

Safety tips: www.alpinesicherheit.at

SKI RESORTS & TICKETS

Having hosted the Winter Olympics in 1964 and 1976, Innsbruck is well-known for its surrounding ski resorts. Skiers and snowboarders have access to over 500 kilometers (310 miles) of pistes in 25 surrounding village resorts connected by a free ski bus. There are 9 major ski resorts in the area.

SKI RESORT	TOP ELEVATION	SKILL LEVEL	VALID TICKET
Nordpark / Seegrube	2260m / 7415'	Intermediate / Difficult	Freizeitticket
Igls / Patscherkofel	2247m / 7372'	All Levels	Freizeitticket
Axamer Lizum	2340m / 7677'	All Levels	Regio Card
Tulfes / Glungezer	2304m / 7559'	Beginner / Intermediate	Regio Card
Schlick 2000	2230m / 7317'	Beginner / Intermediate	Regio Card
Stubai Glacier	3200m / 10,500'	All Levels	Regio Card
Kühtai	2520m / 8268'	Beginner / Intermediate	Regio Card
Rangger Köpfl	2000m / 6562'	Beginner / Intermediate	Regio Card
Mutterer Alm	1887m / 6205'	Beginner / Intermediate	Freizeitticket

There are 3 types of interesting season passes:

REGIO CARD: allows you to ski in about 25 ski resorts from Innsbruck westwards (www.tirol-regio.at)

FREIZEITTICKET: this card allows you to ski in 10 ski resorts in the close surrounding of Innsbruck (www.freizeitticket.at)

TIROL SNOW CARD: this card covers 80 ski resorts all over Tyrol (www.snowcard.tirol.at)

REGIO CARD	NORMAL	EARLY BIRD until end of October	FREIZEITTICKET	NORMAL	EARLY BIRD until end of October
Adult	EUR 378	EUR 348	Adult	EUR 359	EUR 329
Youth (born 1990 – 1993)	EUR 303	EUR 279	Student	EUR 287	EUR 263
TIROL SNOW CARD	Adult	EUR 590	Youth (born before 1991)	EUR 472	

leisure activities.

The large number of students in Innsbruck has made the city a lively place for young people with a variety of activities, culture events and pubs. Tips regarding events, museums, exhibitions, theaters and the pub scene can be found at www.tirolkultur.at or in the local press ("Stadtblatt", "Tiroler Woche"). In order to explore Innsbruck in a couple of days you might want to get the "Innsbruck Card" which entitles you to free transport around Innsbruck and admission to most sights and attractions. The "Innsbruck Card" is valid for 24 hours (EUR 29), 48 hours (EUR 34) and 72 hours (EUR 39).

The card is available at:

Innsbruck Information Office, 6020 Innsbruck / Austria, Burggasse 3.

A SELECTION OF MUSEUMS

Regional Museum Ferdinandeum www.tiroler-landesmuseum.at | Imperial Castle Hofburg www.hofburg-innsbruck.at | Ambras Castle www.khm.at/ambras

CINEMAS

Cineplexx Innsbruck, Tschamlerstr. 7, +43 512 581457, www.cineplexx.at | Metropol, Innstr. 5, +43 512 283310, www.metropol-kino.at | Leokino, Anichstr. 36, +43 512 560470, www.leokino.at | Cinematograph, Museumstr. 31, +43 512 578500, www.leokino.at
Leokino and Cinematograph show foreign films in the original language version. Metropol also shows some films in English.

CONCERTS & EVENTS

Hafen Veranstaltungszentrum, Innrain 149, +43 512 562222, www.hafen.cc | Treibhaus, Angerzellgasse 8, +43 512 572000, www.treibhaus.at | Kulturgasthaus Bierstindl, Klostergasse 6, +43 512 580300, www.bierstindl.at | Weekender Cafe & Club, Tschamlerstr. 3, +43 512 570570, www.weekenderclub.net | Tiroler Landestheater, Rennweg 2, +43 512 52074, www.landestheater.at

innsbruck & surroundings.

Innsbruck is surrounded by high mountains and presents a breathtaking panorama and views of mountain chains and peaks. The contrast between the historic old town with its gothic walkways and the nearby mountains creates a special atmosphere. Innsbruck's old town is one of the most beautiful and best-preserved medieval city centers in Austria.



It is an amazing experience. Innsbruck is a very beautiful city. You can enjoy its landscape, its mountains, life and also do a lot of different sports. You will never regret being here.

Silvia Marco Ponce, Valencia, Spain

Innsbruck can look back on 800 years of history. After its foundation Innsbruck rapidly became an important center for trade due to its convenient location on the way to the Brenner, the lowest pass over the Alps at 1,372 meters. The transportation of goods and people between Venice and Germany made Innsbruck an interregional traffic hub. Here, traders and travelers from all over Europe met. The location on one of the most frequented transit routes in Europe not only provides business impulses but also leads to traffic and environmental problems.

The name of Innsbruck goes back to the bridge built in the 12th century over the river Inn. Founded in 1180 by the Count of Andechs on the right banks of the Inn, Innsbruck was soon surrounded by fortification walls and was granted city status in 1239. In 1363 Innsbruck and Tyrol came under the Habsburgs' dominion and thus became a part of Austria. Innsbruck was a center of European politics and culture under the reign of Emperor Maximilian I (1459 – 1519). For his marriage to Bianca Maria Sforza from Milan, Maximilian commissioned the construction of what has become Innsbruck's landmark, the "Golden Roof". In addition to this roof with its 2,657 gilded copper shingles and its balcony the court nobility used for watching what was going on in the city square, the "Black Men" in the Imperial Church – larger-than-life bronze statues of important historical figures for decorating his tomb – are also attributed to Maximilian.

In the 16th century, under Archduke Friedrich II and his wife Philippine Welser, Innsbruck experienced another heyday. The noble couple's art treasures, rare pieces and curiosities can still be viewed today at Ambras Castle. In 1765, Innsbruck was the location for the wedding of the second eldest son of Empress Maria Theresia, Archduke Leopold, to the Spanish princess Maria Ludovica. The Triumphal Arch was built at the end of Maria-Theresien-Strasse to welcome the wedding guests. In 1805, Tyrol came under the dominion of Bavaria, allied with France. The Tyrolean Rebellion of 1809 against Bavarian and French troops and the Tyrolean leader of the rebellion, Andreas Hofer (1767 – 1810), are depicted in the circular frescoes of the "Riesenrundgemälde", in which the third, decisive battle on Bergisel against Napoleonic and Bavarian troops is portrayed. The First and Second World Wars and the NS regime brought about drastic changes for Tyrol and its population. The separation from South Tyrol following the Peace Treaty of St. Germain in 1919 has influenced Tyrolean politics and identity to this day.

In addition to the city being a bridge between north and south, a traffic and administrative center and the residence of the Tyrolean line of the Habsburgs, Innsbruck was connected to the international railway system in the 19th century – further facilitating its development as a center for tourism. In the 1860's the Alps started to emerge as the region's main tourist attraction. In 1964 and 1976 Innsbruck hosted the Olympic Winter Games and became known worldwide. Ever since, Innsbruck and Tyrol have played a key role in Austria's tourism industry.

Today, the Tyrolean capital with its 130,000 inhabitants is a center for higher education, business, and culture as well as sports and tourism. The combination of its beautiful landscape and historical tradition and the vitality of a modern city make Innsbruck a great place to live.

climate.

Innsbruck is 575m above sea level; the alpine climate provides cold, snowy winters and short summers. Temperatures may drop below zero degrees Celsius in winter and reach up to 35 degrees in summer. The ski season lasts from the beginning of December to mid-April, depending on the altitude. A special characteristic of Innsbruck weather is the strong, warm wind called the "Foehn" (sometimes referred to as "chinook" or "St. Anna's wind" in English). The "Foehn" (a homophone of the German word for hair dryer) brings warm, mild weather but can also cause headaches. The "Foehn" is most common in spring and fall.

FURTHER INFORMATION ON INNSBRUCK AND TYROL

www.innsbruck.at
www.innsbruck-tourism.at
www.tirol.at
www.tirol.gv.at



fascinating environment.



checklist.

BEFORE ARRIVAL

- ☐ I have gathered information on studying at MCI at my home institution and on MCI's website www.mci.edu.
- ☐ I have discussed my selection of courses with my local advisor and ensured that the credits earned at MCI will be transferred to my home university.
- ☐ I have completed MCI's Application Form and the Learning Agreement and have had both documents signed by the international co-ordinator at my home institution.
- ☐ I have submitted the Application Form, Learning Agreement and Transcript of Records online by 15. May / 15. November
by postal service: International Relations Office at MCI, 6020 Innsbruck / Austria, Universitaetsstr. 15 or
by fax: +43 512 2070-1699 or
by e-mail: international@mci.edu
- ☐ I have found accommodation.
- ☐ I have made sure my passport is valid throughout my stay in Innsbruck.
- ☐ I have made sure whether possible illness and accidents are covered by my insurance in Austria. For non-EU / EEA and Swiss citizens: I have applied for a visa or residence permit for Austria at the Austrian Embassy.
- ☐ I have informed MCI and the student dormitory of my exact arrival time.

TO BRING ALONG

- ☐ Valid passport and visa (if required)
- ☐ Proof of valid health insurance (please bring a copy)
- ☐ Proof of sufficient financial means for my stay in Austria (proof of stipend, credit card or bank statement)
- ☐ Letter of admission from MCI
- ☐ Copy of learning agreement
- ☐ Credit / debit card
- ☐ Cash for the first days in Innsbruck

FIRST STEPS IN INNSBRUCK

- ☐ I have moved into my accommodation.
- ☐ I have paid my first monthly rent to my dormitory / landlord.
- ☐ I have completed and submitted my registration form to the "Meldeamt".
- ☐ As a student from EU / EEA or Switzerland, I have applied for a confirmation of registration.
- ☐ I have participated in the orientation program.

BEFORE DEPARTURE

- ☐ I have deregistered at "Meldeamt" of the City of Innsbruck (bring along registration form).
- ☐ I have returned my room key and paid all open bills (e.g. telephone).
- ☐ I have closed my bank account.
- ☐ I have checked whether I have all of the necessary documents regarding my study program at MCI (e.g. confirmation of stay).

MCI MANAGEMENT CENTER INNSBRUCK
 BRIDGING UNIVERSITY & BUSINESS®
 6020 Innsbruck / Austria, Universitaetsstrasse 15
 +43 512 2070-1600, international@mci.edu, www.mci.edu

MCI®
 BRIDGING UNIVERSITY
 & BUSINESS

PATRONS



SPONSORS



SUBSIDIARIES

